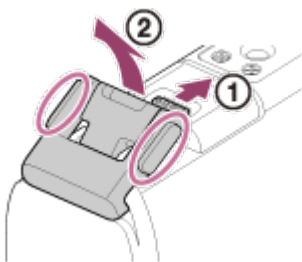

Using the Waterproof Case

Using the waterproof case

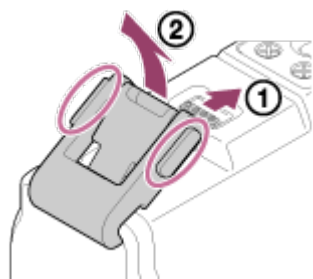
By inserting the camera in the waterproof case, you can shoot movies at a waterfront.

1. Slide the buckle lock in the direction of ① and hold it, then hold the circled parts and swing out the buckle in the direction of ②.

FDR-X1000V (SPK-X1)



HDR-AS200V (SPK-AS2)

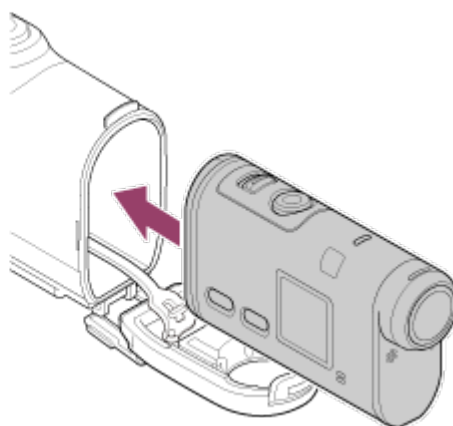
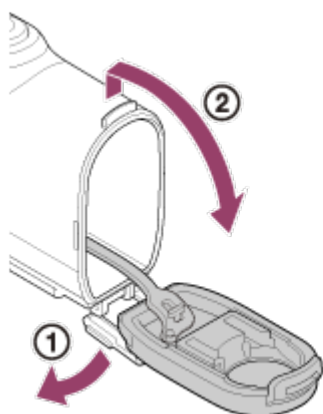


2. Open the case cover.

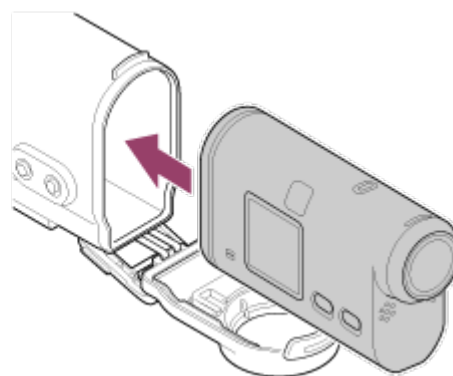
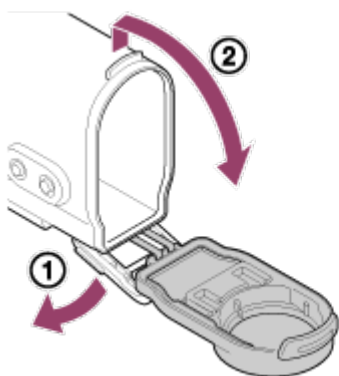
3. Insert the camera in the case body.

- Release the REC HOLD (lock) switch on the camera.

FDR-X1000V (SPK-X1)

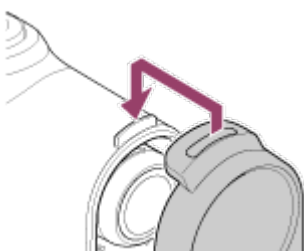


HDR-AS200V (SPK-AS2)

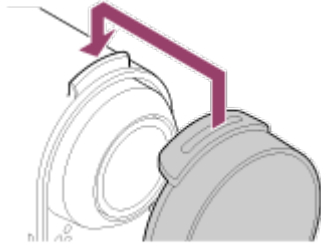


4. Insert the tab of the case body into the slot of the case cover.

FDR-X1000V (SPK-X1)

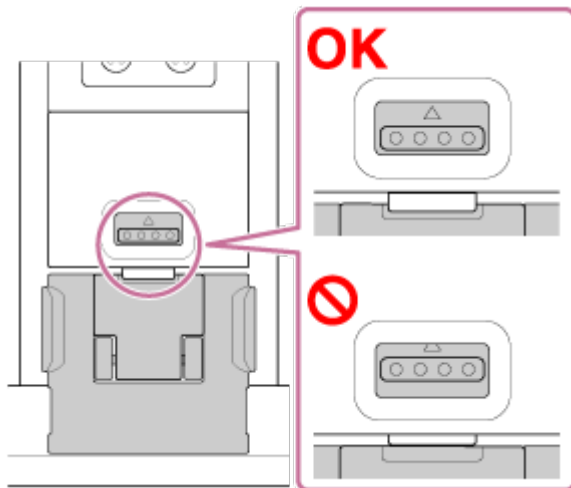
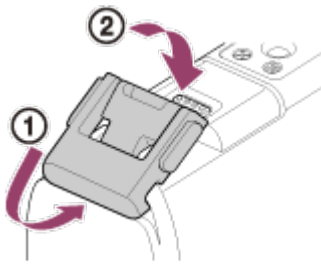


HDR-AS200V (SPK-AS2)

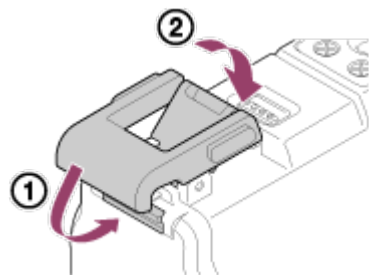


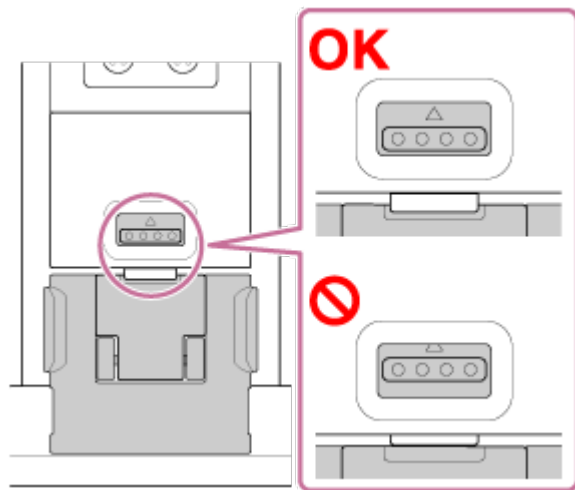
5. Hook the buckle over the tab on the lower part of the case cover ①, then close the buckle in the direction of ②, until it clicks into place.
- Make sure the buckle is locked by the buckle lock.

FDR-X1000V (SPK-X1)



HDR-AS200V (SPK-AS2)





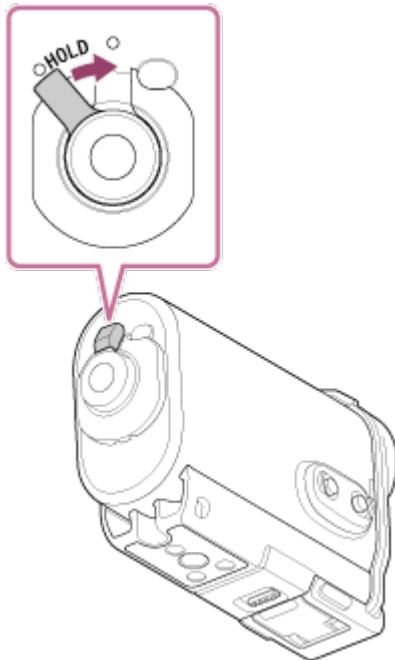
Note

- You cannot operate the REC button when the REC HOLD switch is set to the lock position. Release the lock in the direction of the arrow below, before operation.

FDR-X1000V (SPK-X1)



HDR-AS200V (SPK-AS2)



- Since the camera in the waterproof case fails to focus underwater, it is not suitable to shoot images underwater.
- You can record audio while the camera is in the waterproof case, but the sound level is reduced.
- Thread a suitable cord through the leash attachment hole of the waterproof case, then attach the cord to an item you intend to use with the camera.

[11] How to use | Getting Started | Using the Waterproof Case

On waterproof performance of the waterproof case

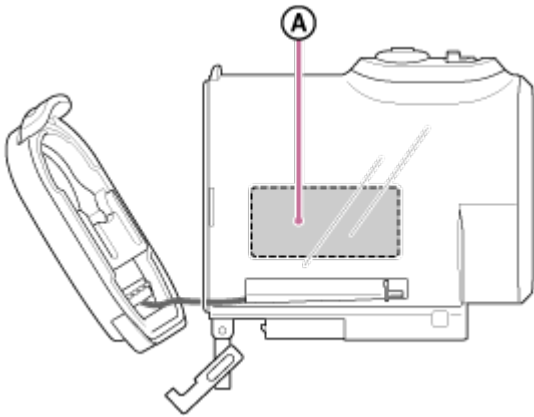
- When the camera is inserted in the supplied waterproof case, the waterproof performance is as follows.
 - FDR-X1000V (SPK-X1) is operable up to a water depth of 10 m for 60 minutes.
 - HDR-AS200V (SPK-AS2) is operable up to a water depth of 5 m for 30 minutes.
- The waterproof performance is based on the testing standards of our company.
- Do not subject the waterproof case to pressurized water, such as from a tap.
- Do not use the waterproof case in hot springs.
- Use the waterproof case in the recommended operating water temperature range of -10 °C to +40 °C (14 °F to 104 °F).
- Sometimes waterproof performance is lost if the waterproof case is subjected to a strong shock such as from being dropped. We recommend the waterproof case be inspected at an authorized repair shop (chargeable).
- Not to withstand continuous submersion or harsh environmental situations.

Using an anti-fog sheet (AKA-AF1 (sold separately))

- Insert the anti-fog sheet indoors with low humidity.
- Insert the anti-fog sheet in the camera a couple of hours before shooting.
- If you do not use the anti-fog sheet, place it in a bag and keep the top sealed.
- By drying the anti-fog sheet sufficiently, you can use it approximately 200 times repeatedly.

SPK-X1 (supplied with FDR-X1000V)

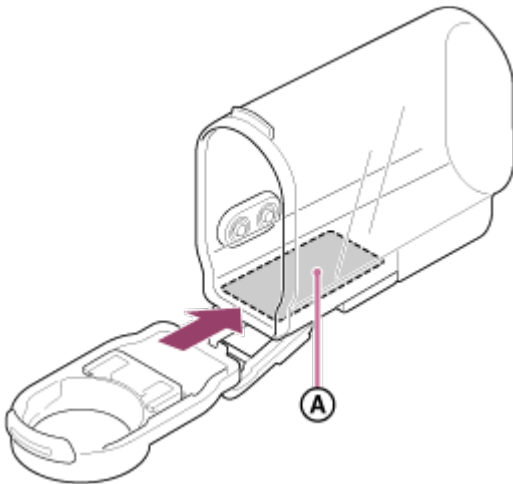
- When using the optional anti-fog sheet (AKA-AF1), place it in the gap on the opposite side of the camera display.



Ⓐ: Anti-fog sheet

SPK-AS2 (supplied with HDR-AS200V)

- When using the optional anti-fog sheet (AKA-AF1), place it in the gap on the bottom of the camera.



Ⓐ: Anti-fog sheet

- Do not throw the waterproof case into the water.
- Avoid using the waterproof case under the following situations. In these situations moisture condensation or water leakage may occur and damage the camera.
 - In a very hot or humid place
 - In water hotter than +40°C (104°F)
 - At temperatures lower than –10°C (14°F)
- Do not leave the waterproof case under direct sunlight or in a very hot and humid place for a long period of time. If you cannot avoid leaving the waterproof case under direct sunlight, be sure to cover the waterproof case with a towel or other protection.
- When the camera overheats, it may be automatically turned off or recording may malfunction. To use the camera again, leave it in the cool place for a while to cool down.
- If sun oil is on the waterproof case, be sure to wash it off thoroughly using lukewarm water. If the waterproof case is left with sun oil on its body, the surface of the waterproof case may become discolored or damaged (such as cracks on the surface).

[13] How to use | Getting Started | Using the Waterproof Case

Water leakage

In the unlikely event that a malfunction of the waterproof case causes damage due to water leakage, Sony does not guarantee against damages to the equipment contained in it (camera, battery pack, etc.) and the recorded contents, nor expenses entailed in the photography.

[14] How to use | Getting Started | Using the Waterproof Case

Waterproof packing

This unit uses an waterproof packing to maintain its water resistance. The waterproof packing maintenance is very important. Failure to do waterproof packing maintenance according to the instructions may lead to water leaks and cause this unit to sink.

Inspect the waterproof packing

- Carefully check that there is any dirt, sand, hair, dust, salt, threads, etc., on the waterproof packing. If found, be sure to wipe off with a soft cloth.
- Lightly run your fingertip around the waterproof packing to check for any invisible dirt.
- Be careful not to leave any cloth fibers on the waterproof packing after wiping it.
- Check the waterproof packing for cracks, skewing, distortion, fine splitting, scratches,

- embedded sand, etc. Replace the waterproof packing if you find any of these.
- Inspect the waterproof packing contact surface on the case body in the same way.

[15] How to use | Getting Started | Using the Waterproof Case

How to check for water leaks

Before installing the camera, always close the waterproof case and immerse it in water to make sure no water leaks in.

When finding a malfunction of waterproof case

If a malfunction is found by inspection of the waterproof packing or check for water leaks, stop using this unit immediately and take it to the nearest Sony dealer.

[16] How to use | Getting Started | Using the Waterproof Case

Maintenance

- After recording in a location with a sea breeze, wash this unit thoroughly in fresh water with the buckle fastened to remove salt and sand, then wipe with a soft dry cloth. It is recommended that you submerge the waterproof case in fresh water for about 30 minutes. If it is left with salt on it, metal portions may be damaged or rust may form and cause water leakage.
- If sun oil is on the waterproof case, be sure to wash it off thoroughly using lukewarm water.
- Wipe the inside of the waterproof case with a soft dry cloth. Do not wash it with water.

Be sure to perform the above maintenance each time you use the waterproof case. Do not use any type of solvent such as alcohol, benzine or thinner for cleaning, as this might damage the surface finish of the waterproof case.

When storing the waterproof case

- To prevent deterioration of the waterproof packing, store the waterproof case in a cool, well-ventilated location. Do not fasten the buckle.
 - Prevent dust from collecting on the waterproof packing.
 - Avoid storing the waterproof case in a cold, very hot or humid place, or together with naphthalene or camphor, as these conditions might damage the waterproof case.
-