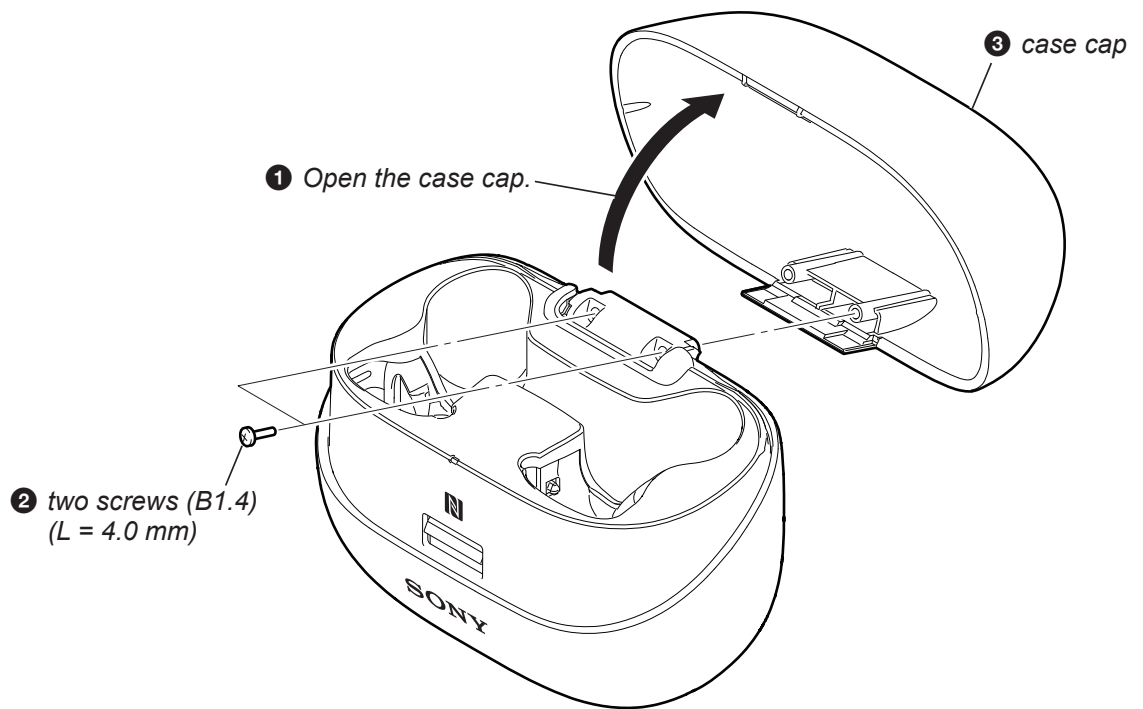
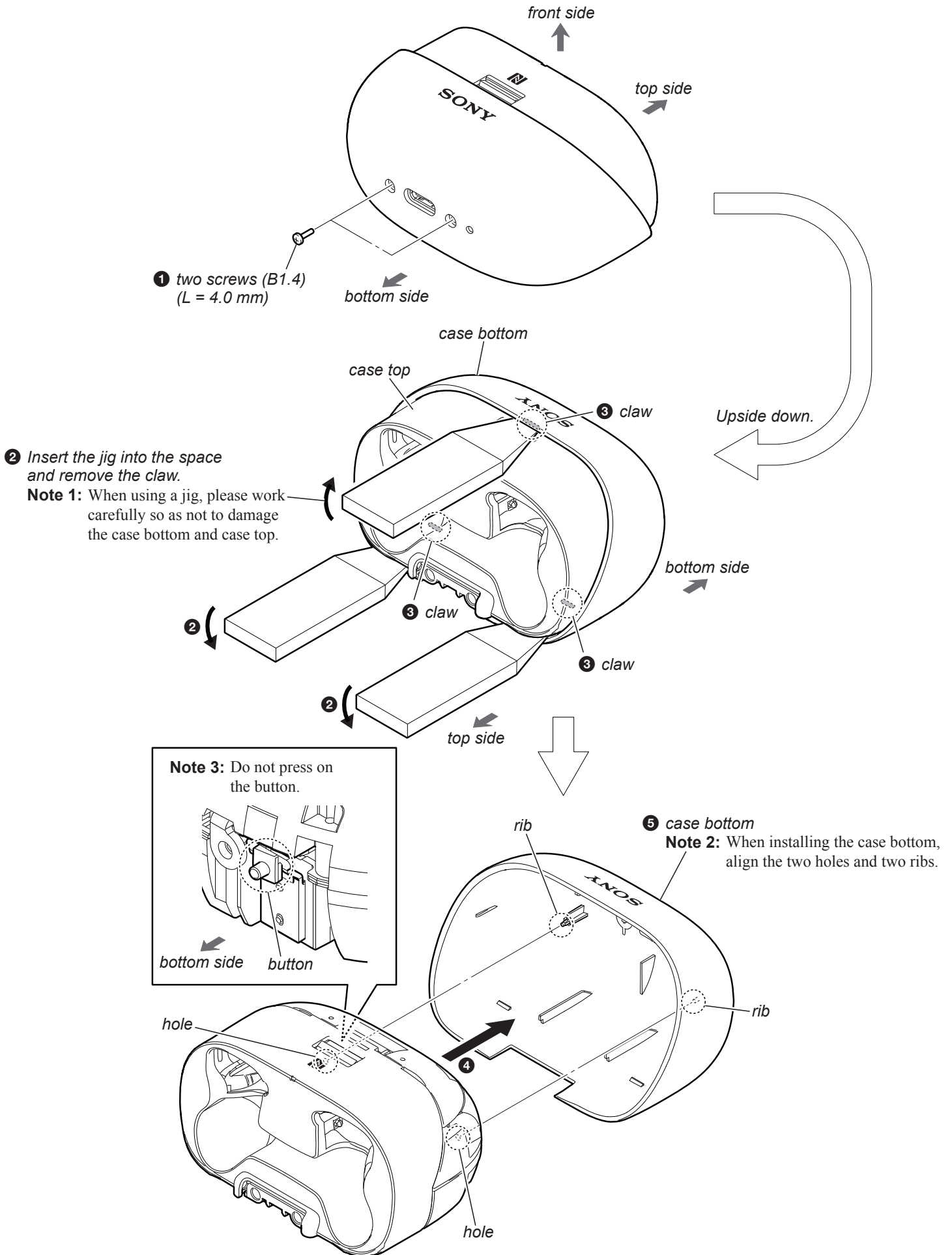


Note: Follow the disassembly procedure in the numerical order given.

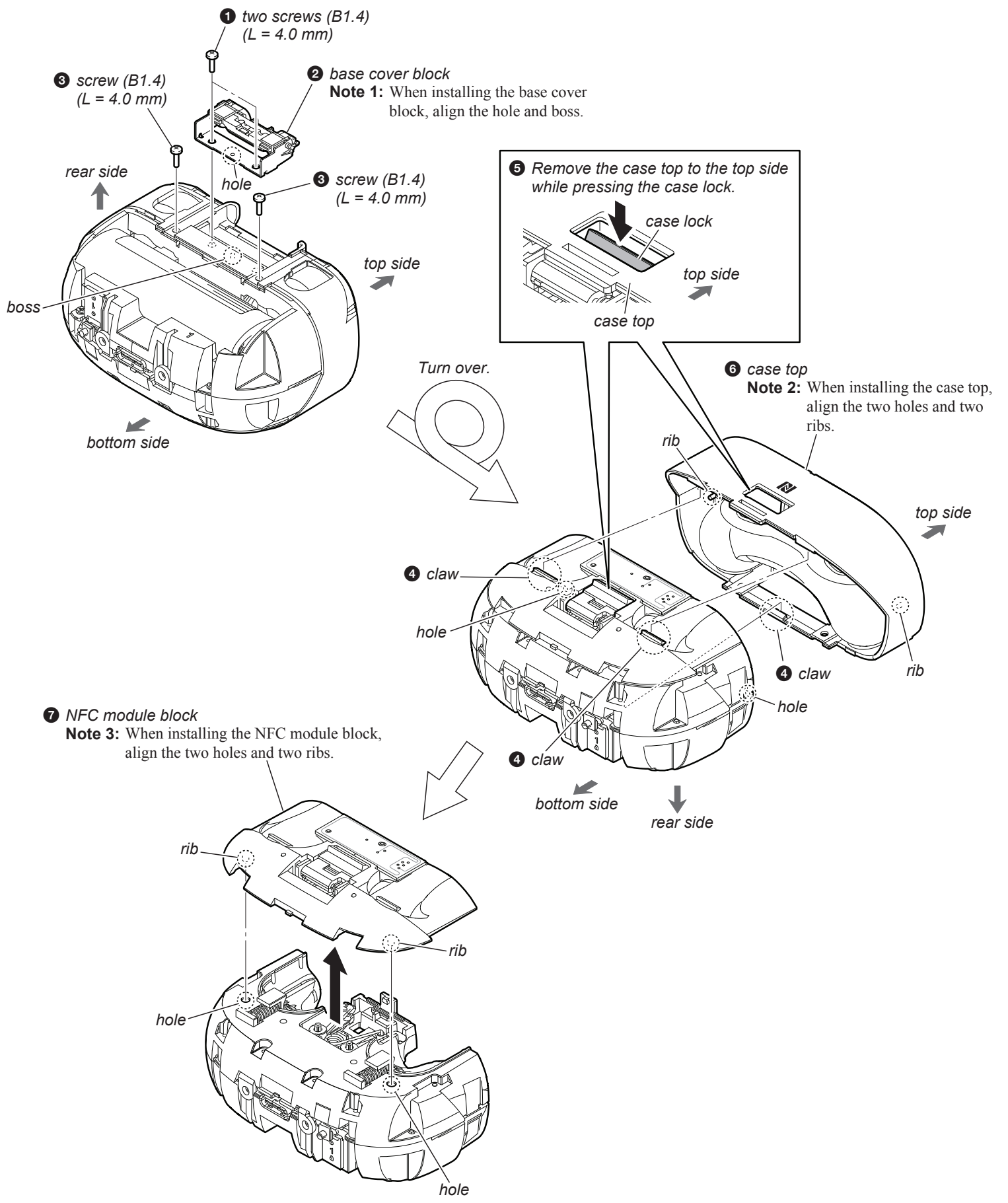
2-2. CASE CAP



2-3. CASE BOTTOM



2-4. NFC MODULE BLOCK



2-5. NFC MODULE, ADHESIVE SHEET (CASE NFC)

Note 1: Only the NFC module or the adhesive sheet (CASE NFC) can not be replaced. When replacing the WF-SP900L (L-ch), replace the NFC module at the same time as WF-SP900L (L-ch). The new NFC module and adhesive sheet (CASE NFC) are included in the repair parts of WF-SP900L (L-ch). (See page 28)

