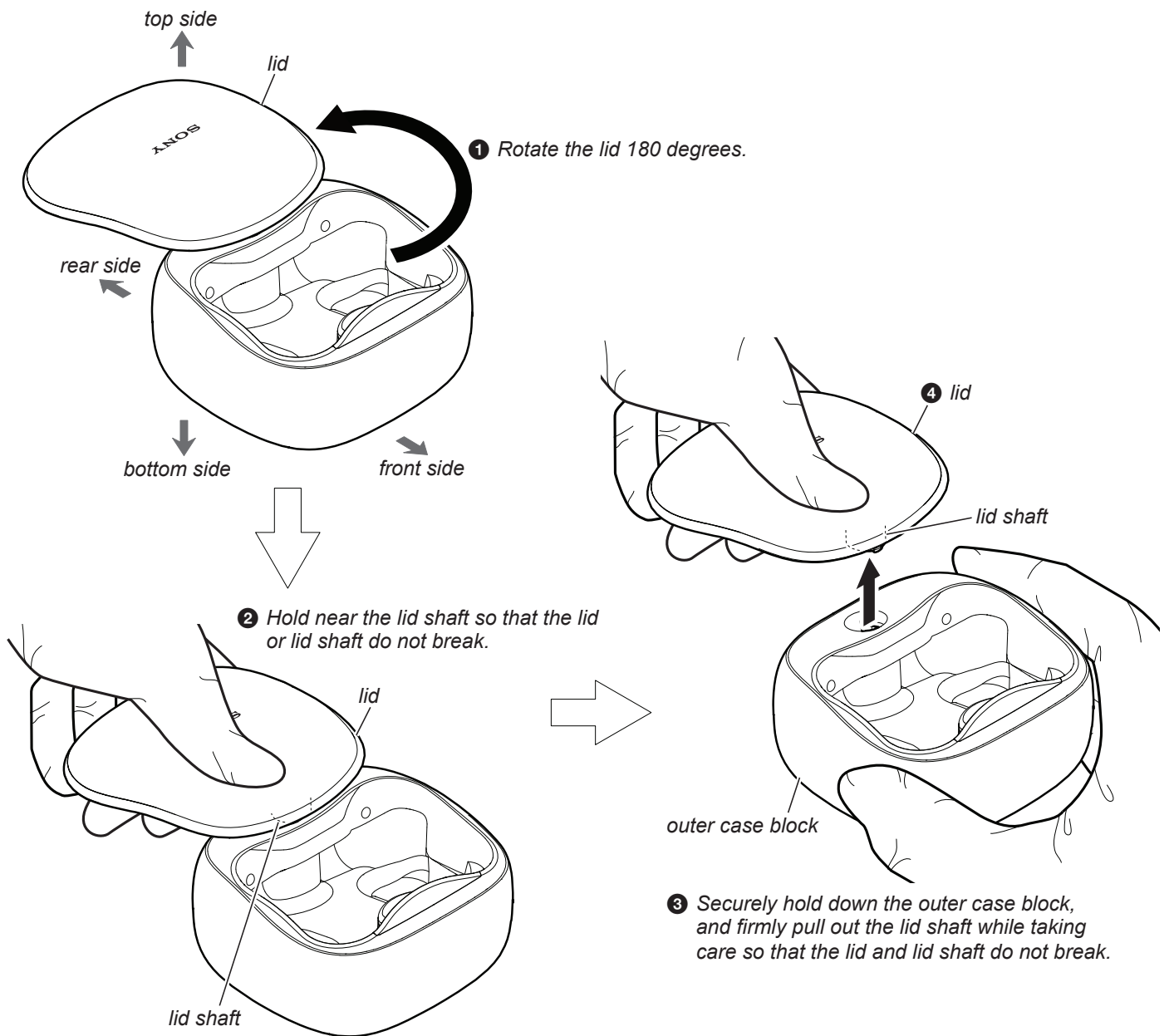


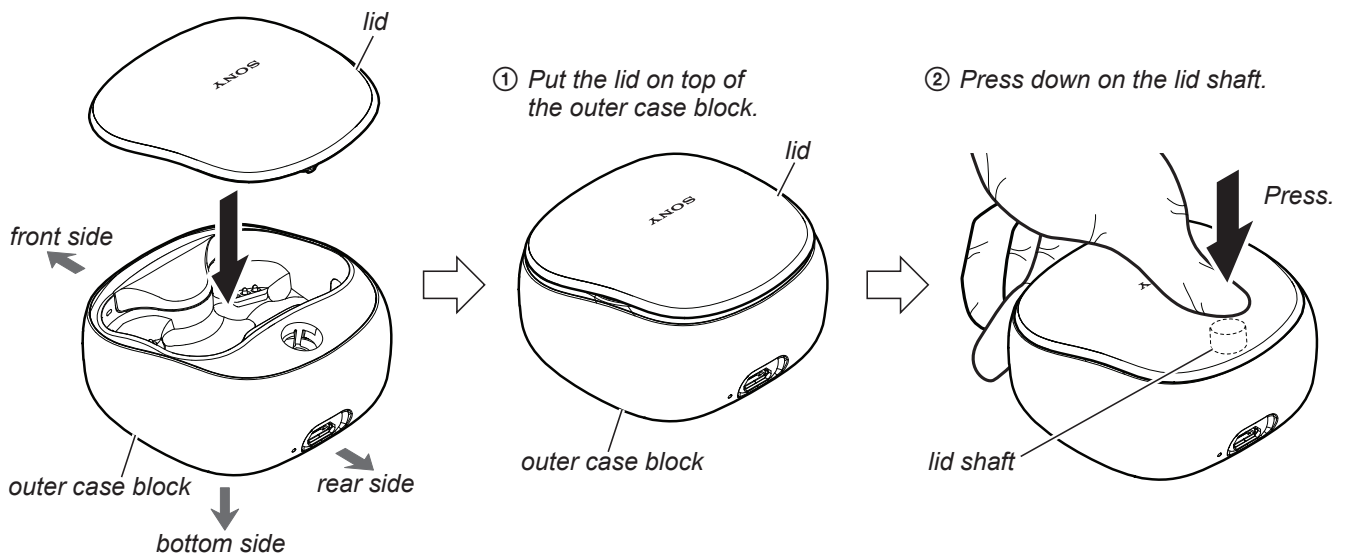
Note: Follow the disassembly procedure in the numerical order given.

2-2. LID

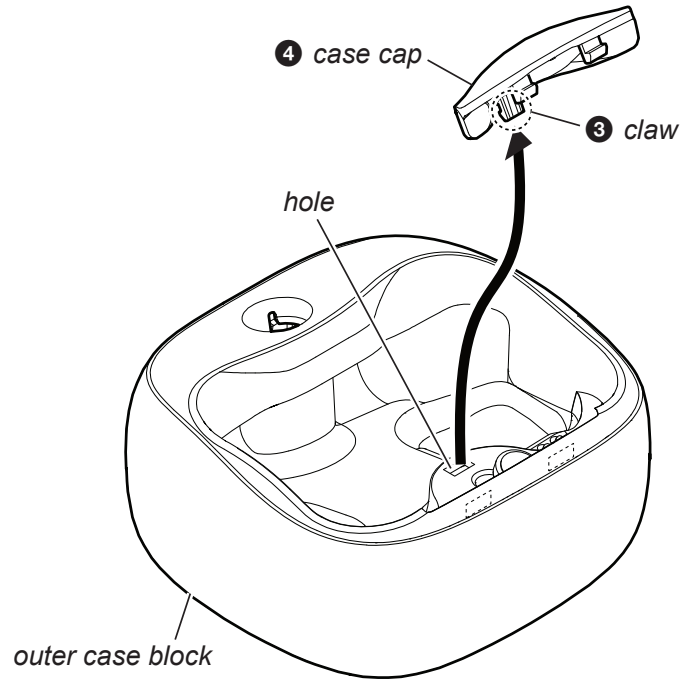
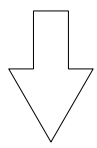
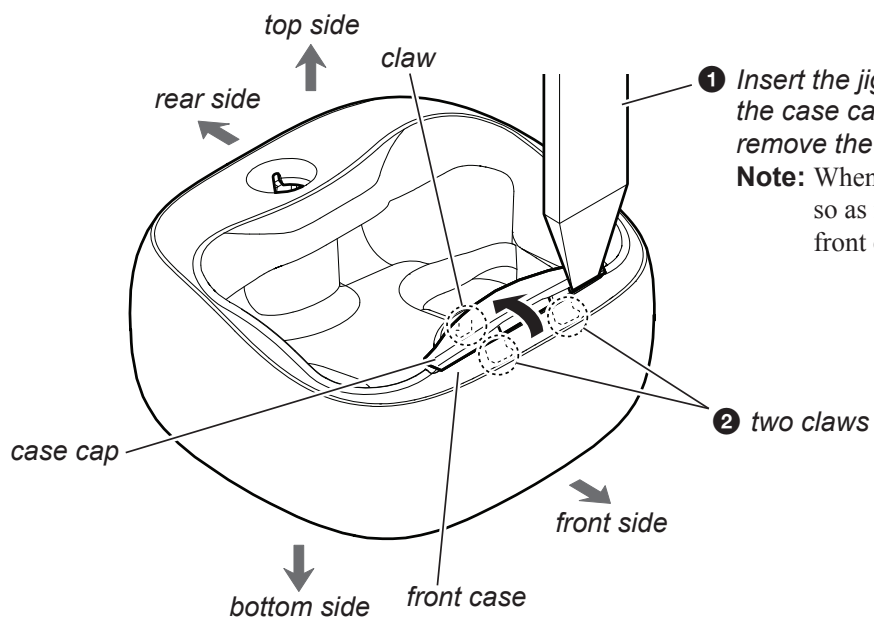


• How to install the lid

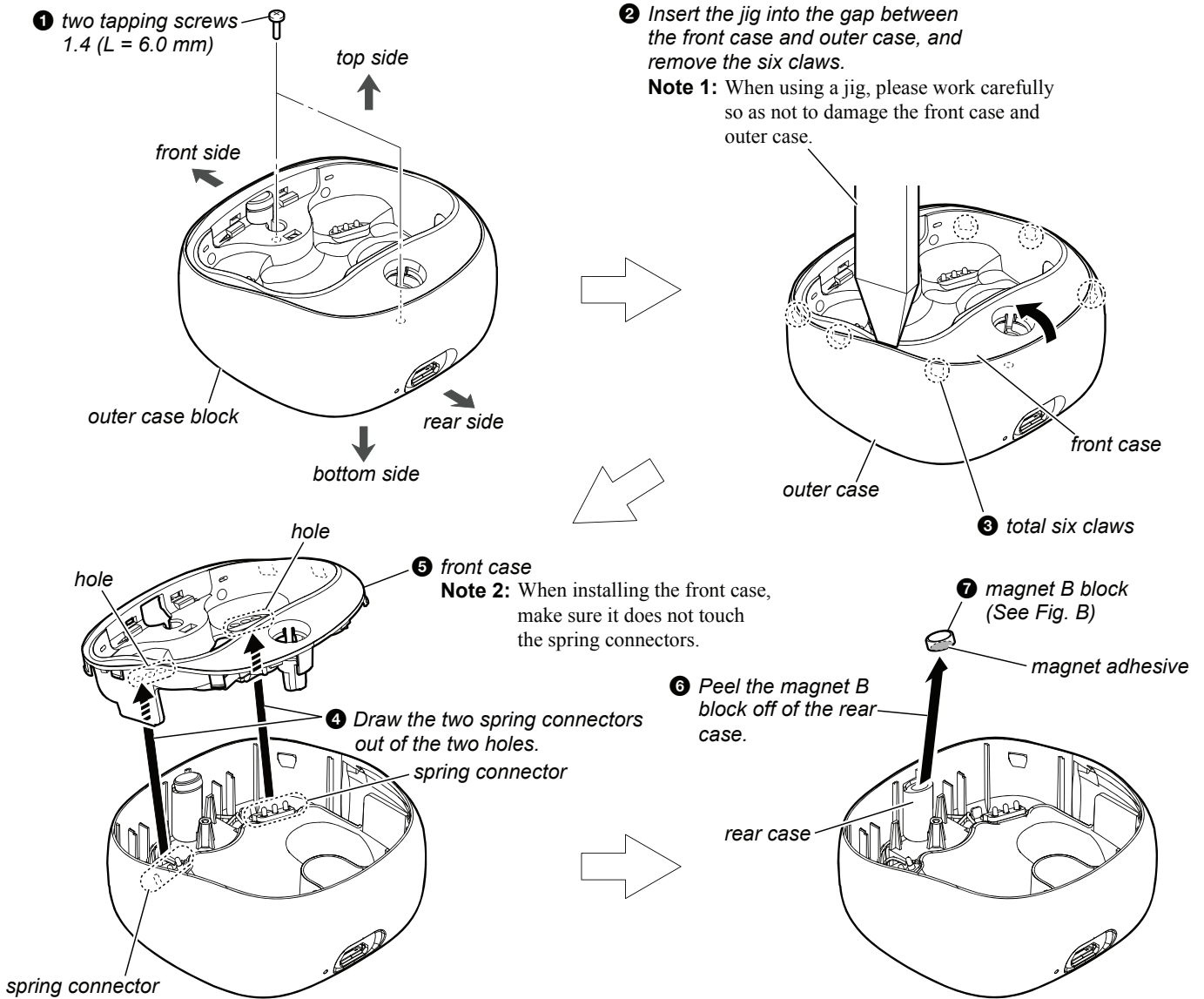
Attach in order ①, ②.



2-3. CASE CAP



2-4. FRONT CASE, MAGNET B BLOCK



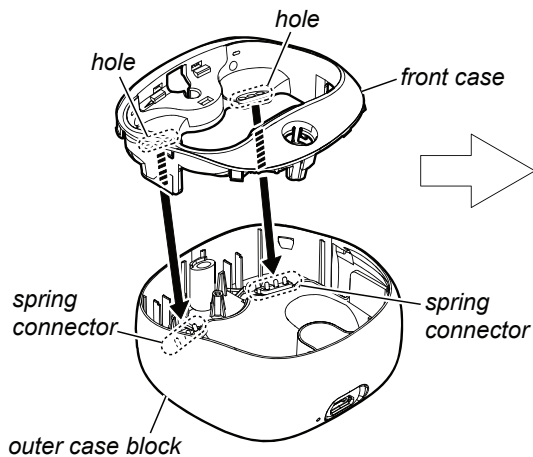
• How to install the magnet B block

< Fig. B >

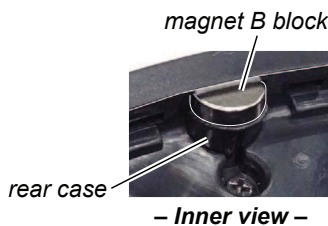
Attach in order from ① to ③.

- ① Align the two spring connectors and two holes, and install the front case.

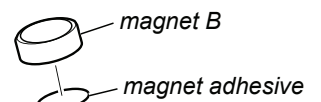
Note 2: When installing the front case, make sure it does not touch the spring connectors.



• Installation position of the magnet B block

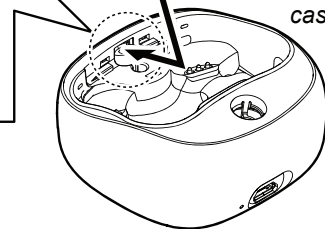


- ② Affix the magnet adhesive to magnet B.



magnet B block

- ③ Install the magnet B block to the rear case.



2-6. CRADLE NFC BOARD, REAR CASE, LIGHT GUIDE

Note 1: When replacing the CRADLE NFC board, make sure to refer to “REPAIRING AND REPLACING OF THE BC-WF-SP700N (charging case) OR THE CRADLE NFC BOARD” on page 9.

Note 2: The lithium ion storage battery is connected.
Be careful so that terminals are not short-circuited.

