

Resetting procedure:

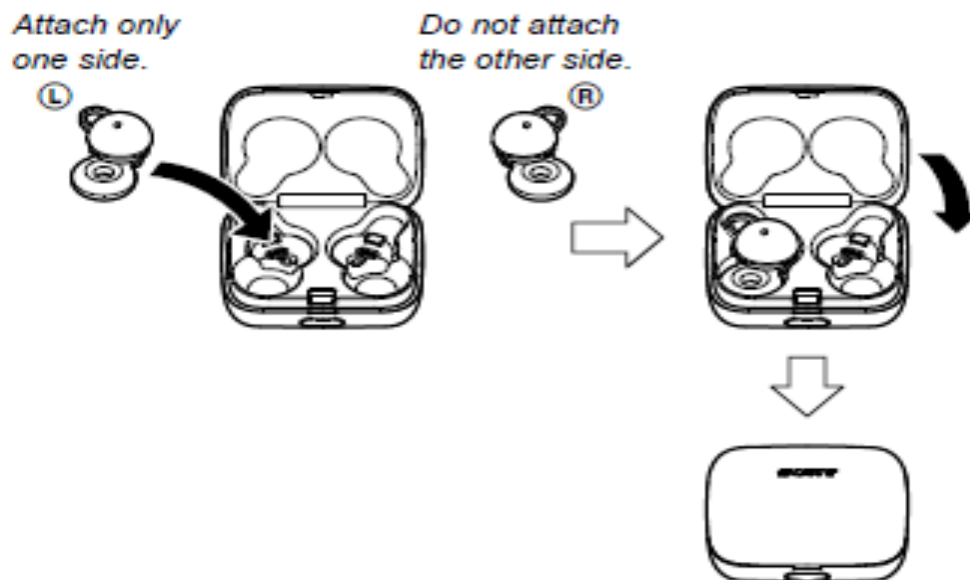
Note 2: To reset the headset, work one side at a time.

Note 3: If the headset is stored in the charging case, remove the left and right headset from the charging case in advance.

1. Attach the headset on the left or right side to the charging case and close the lid of the charging case.

Note 4: Check the headset is securely locked in the charging case.

Note 5: Close the charging case lid correct the headset mounting position and lock it securely.

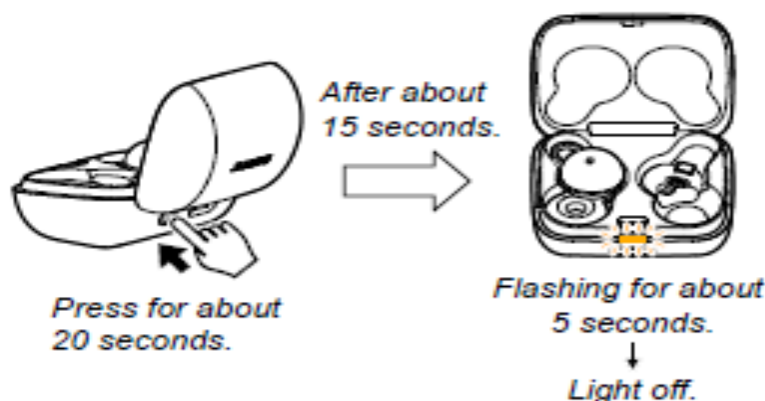


2. Press the "Lid open" button on the front of the charging case to open the lid.



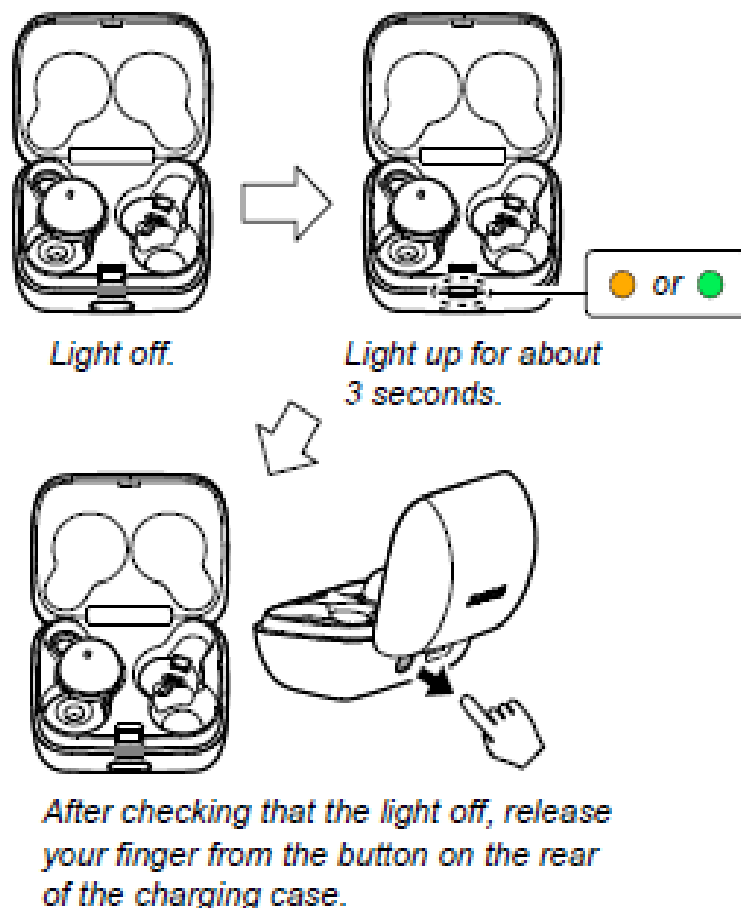
3. Press the button on the rear of the charging case for about 20 seconds, and check that the indicator (orange) flashing slowly for about 5 seconds and then light off.

Note 6: About 15 seconds after you start pressing the button on the rear of the charging case, the charging case indicator will start flashing.



4. After the charging case indicator light off, the charging case indicator (orange or green) light up about 3 seconds and then light off. After checking that the indicator is light off, release the button on the rear of the charging case.

Note 7: The indicator on the charging case after the reset is complete, indicates remaining battery level in the headset.



5. Remove the headset from the charging case, then return to step 1 and attach the headset on the other side to the charging case. After that, perform the work up to step 4 to complete the reset of the left and right headset.

INITIALIZATION METHOD

After completing the repairing and replacing, be sure to initialize this unit according to the following procedure.

Note 1: When initialization is performed, all device registration (pairing) information is deleted and settings return to factory default.

Note 2: If the rechargeable battery in the charging case does not have enough remaining battery level, the headset cannot be initialized. Charge the charging case before performing initialization.

Note 3: Even if initialization is performed after software update, the updated state is retained.

Note 4: If you perform initialization with the voice guidance language changed state, the language also return to the factory default.

Note 5: It is also possible to perform initialization using the “Sony | Headphones Connect” application.

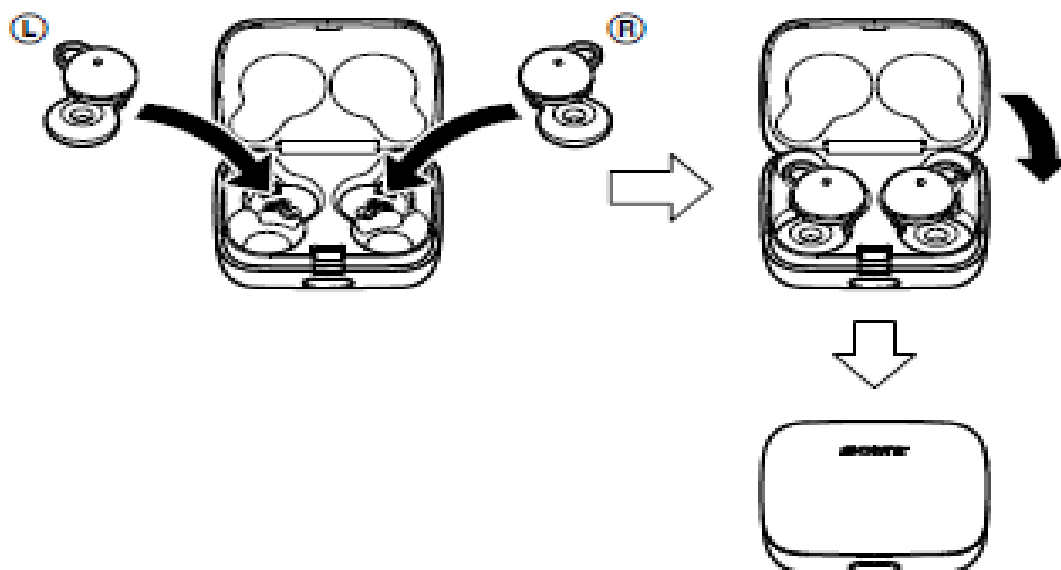
Initialization procedure:

Note 6: If the headset is stored in the charging case, remove the left and right headset from the charging case in advance.

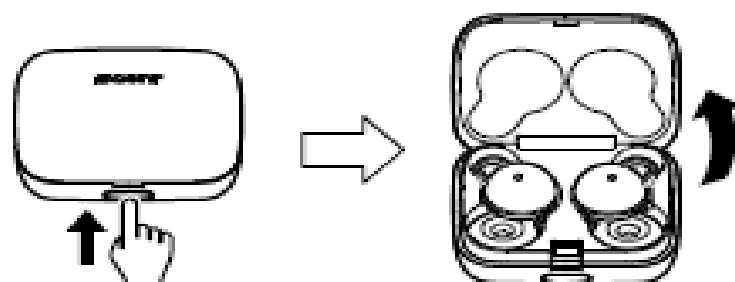
1. Attach the left and right headset to the charging case and close the lid of the charging case.

Note 7: Check the headset is securely locked in the charging case.

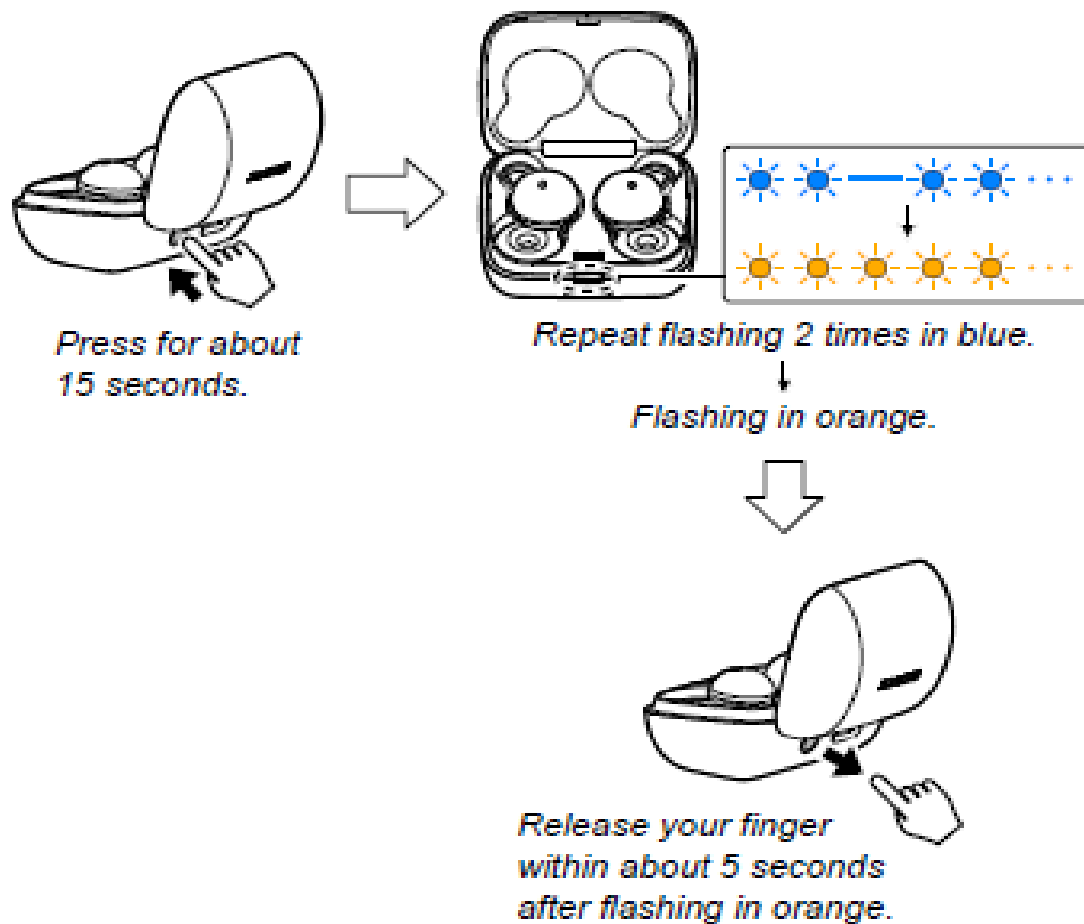
Note 8: Close the charging case lid correct the headset mounting position and lock it securely.



2. Press the “Lid open” button on the front of the charging case to open the lid.



3. Press the button on the rear of the charging case for about 15 seconds, after the indicator (blue) repeat flashing 2 times, then check that the indicator (orange) flashing and release your finger within about 5 seconds.



4. The charging case indicator (green) flashing 4 times and light off to complete initialization.

Note 9: If the charging case indicator (green) does not flashing 4 times, the headset is not initialized. Please try again from step 3.

